

Waterford Mennonite Church | August 11, 2019

buzz

Introducing Larry and Marilynn Hooley



Larry and Marilynn Hooley were married in 1962 and have been married 57 years. Throughout their married life, they've lived in Middlebury, Goshen, Shipshewana; Phoenix, Ariz., and Denver, Col., where Larry did his 1-W service.

Larry grew up in Middlebury and graduated from Middlebury High School. He worked for Elkhart Products in Elkhart, Ind. as a supervisor for 27 years. In Phoenix he worked for an inventory auditor doing auditing in pharmacies throughout the state. When they moved back to Indiana, they moved near Stone Lake in Shipshewana, where he worked at Supreme as an inspector.

Marilynn grew up near Goshen and New Paris and worked at Coachmen as an electrician. She received a financial degree from Glen Oaks Community College. When they lived in Phoenix, she worked as the financial controller for Fashion Resource.

Larry and Marilynn have a 55-year-old son Gregory who is married to Carol Christner. They gave Larry and Marilynn a grandson Josh and a great grandson Hudson. Their daughter Colleen was killed in a car accident in 1963 when she was 6½ months old. Their other children, Marcia born in 1966, Michael born in

1970, and Raffaella born in 1972, all died at birth due to complications.

Over the years they've enjoyed biking, desert hiking, regular and desert golfing, and traveling. The last 11 years, they spent the winters in Arizona and Florida. They no longer travel due to Larry's short-term memory problem and Marilynn's problems with her hip.

Since moving to Goshen, they have found Waterford Mennonite Church to be a very nice and friendly group of Christians that they would like to be a part of. They extend their thanks to everyone.

Ripple Effect Choir Concert

The Agape Sunday school class invites the congregation to a Ripple Effect choir concert September 14 at 7 p.m. at WMC. This will be a 75 minute program with no intermission. A free will offering will be taken.

The Ripple Effect choir is dedicated to the unification of communities and transformation of social awareness. As a unique ensemble, the singers place great emphasis on diversity, hope, and healing, as well as megadoses of fun! Their eclectic, challenging repertoire includes everything from hymns and spirituals to jazz and musical theater. Led by Sherry K, the choir seeks to influence and encourage others to make a difference and "ripple" out from their own lives by building bridges and promoting kindness.

The Ripple Effect is not just a group of voices, but a collective truth-speaking voice in the world by way of the enormous power of music.

Ripple Effect Choir has been invited to perform at Carnegie Hall this December. Proceeds will help with their costs of getting there.

The Agape class will be offering cookies and a time of fellowship following the concert.



Waterford Mennonite Church

65975 State Road 15
Goshen, IN 46526
p: 574 533-5642
f: 574 533-0879
office@waterfordchurch.org
www.waterfordchurch.org

Staff Team

Administrative Ministry

- Karen Hostetler
Secretary
- Elvina Schmidt
Bookkeeper
- Janet Shoemaker
*Coordinator of
Administrative Ministries*
- Andrea Golden
Business Manager

Facilities Ministry

- Jan Oostland
Facilities Manager
- Courtney Shetler
Custodian
- Irma Perez
Custodian

Pastoral Ministry

- Neil Amstutz
Pastoral Team Leader
- Katie Misz
Pastor of Family Life
- Don Miller
*Interim Pastor of Senior
Ministries*
- Cindy Voth
Pastor of Community Life

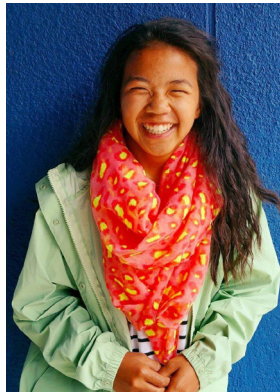
The *Waterford Buzz* is normally published weekly for members of Waterford Mennonite Church. Items for inclusion should be given to the editor by 5 p.m. Monday preceding publication.

Sophie Miller,
editor; 574 903-9158
buzz@waterfordchurch.org

Reflection on Peace Camp

By Emma Eitzen

During the week of July 21, I attended a Young Adult Peace Camp with MCC Great Lakes. When I found out about this camp, I was at first interested in just getting out of my boring life and doing something



new and making friends. Seven young adults between the ages of 19 and 28 gathered together with two leaders, Brooke and Jes. Little did I know that I was in for one of the most exhausting, yet fulfilling weeks of my summer.

We engaged in conversations on the theme of “Responding to Violence” and responded to the bible passage, Micah 4:1-5. Some of the topics we talked about included, Restorative Justice, Systematic Violence, and what it means to be part of the Beloved Community. Together we learned, we discussed, and we prayed about the violence happening around us and for the offended and those who offended. We travelled across Chicago, seeing both the wealthy and the impoverished areas and being made aware of the separation of areas. Together we found hope in the places where it all seems lost. Together, we grew as young adult peacemakers.

I chose to add this to my SALT Website because I believe that what I learned this week will go with me into my future, into my life of service to others. I want my readers to know what impacted me and what led me to choose to do SALT, and this is part of it. To read more about my week, go to this website: <https://sites.google.com/view/eitzenemma/stories/peace-camp>.

I want to thank Waterford for giving me the opportunity to engage in such conversations with other young adults.

The Loss of Turtle Island

The Loss of Turtle Island, a participatory learning experience sponsored by Mennonite Central Committee, will be held at Waterford Mennonite Church on Sunday, August 25 at 7:00 p.m.

Participants step onto blankets and are taken back in time, guided through the history of contact between Indigenous Peoples and Europeans with the assistance of a facilitator and narrator. The experience explores the historic relationship between Europeans, specifically Mennonites in the United States, and the Indigenous nations who inhabit the land we call the United States of America.

Why relive this painful part of history? Members of the Dismantling the Doctrine of Discovery Working Group point to the fact that it isn't over. Doctrine of Discovery assumptions were incorporated into international law and continue to affect Indigenous Peoples today. For example, these assumptions explain why some Indigenous Peoples do not have title to their own land and cannot prevent outside corporate interests from stealing or polluting it.

All who desire to learn more about the history of the land we live on and our part in that story are encouraged to attend this workshop.

Thank you

We would like to thank our Waterford Church family for the many kind words, cards and prayers we've received after the passing of my father. We so appreciate our church family and the support shared with us.

—Doug, Ben and Isaiah Wengerd